

COLORS



Specifications

■ Dimensions, weight & capacity, performance

Model	Double Cab		
	RHD		
4x4			
Wide body			
Engine (Output)	YD25DDT1 (Mid)		YD2500T1 (High)
Transmission	6MT	6MT	7AT
Overall length	mm	5255	5255
Overall width	mm	1790	1850
Overall height	mm	1800	1840
Wheelbase	mm	3150	3150
Tread	front/rear	mm	1550/1550
Min. ground clearance	mm	218	228
Load bed	length	mm	1503
	width	mm	1560
	height	mm	474
Gross vehicle weight	kg	2910	
Curb weight	kg	1806	1829
Seating capacity	persons	5	
Min. turning radius	m	5.9	6.2
Fuel tank capacity	L (VDA)	80	
Tires & wheels	tires	205R16C	255/70R16
	wheels	Steel 16 x 6J	Alloy 16 x 7J
Approach angle	degrees	31.2	32.2
Departure angle	degrees	31.1	26.5

■ Mechanical features

Engine	Code (Output)	YD25DDT1 (Mid)	YD2500T1 (High)	
Type		In-line 4-cylinder DOHC 16 valves VGS Turbo Intercooler		
Displacement	cc	2488		
Bore x stroke	mm	89 x 100		
Max. power	kW (hp)/rpm	120 (163) / 3600	140 (190) / 3600	
Max. torque	Nm (kg-m)/rpm	403 (41.1) / 2000	450 (45.9) / 2000	
Compression ratio		15 to 1		
Fuel system		Common rail controlled by ECES 32 bits		
Transmission	Type	6-speed MT	6-speed MT	7-speed AT with manual mode
	Gear ratios	1st	4.685	4.685
		2nd	2.479	3.170
		3rd	1.624	2.027
		4th	1.208	1.412
		5th	1.000	1.000
		6th	0.809	0.864
		7th	-	0.775
	reverse	4.709	4.709	4.041
Final gear ratio (hypoid final gear)		3.539 (3.692 for RHD Wide body)	3.692	3.357
Steering		Rack & pinion		
Suspension	front	Independent double wishbone with front stabilizer bar		
	rear	Multi-leaf with shock absorber		
Brakes	front	Ventilated discs		
	rear	Drums		

Nissan Motor Co. Ltd. reserves the right to make any changes without notice concerning colors, equipment or specifications detailed in this brochure, or to discontinue individual models. The colors of vehicles delivered may differ slightly from those in this brochure. The specifications vary for different countries depending on local market conditions. Please consult your local dealer to ensure that the vehicle delivered accords with your expectations.

To know more visit www.nissan-nepal.com | [NissanNepal](https://www.facebook.com/NissanNepal) | [NissanNepal](https://www.instagram.com/NissanNepal) | [NissanNepal](https://www.youtube.com/NissanNepal) Or visit any of our dealerships across the country.

Pioneer Moto Corp Pvt. Ltd.
Kamaladi, Kathmandu, Tel: 01-4427871, Mob: 9801142997/95/89/88/26/25
E-mail: sales@nissan-nepal.com



Innovation that excites

NP300
NAVARA



RIDE FIRST CLASS EVERY DAY.

In the NP300, you'll find unexpected comfort and space from every seat. Up front, astronaut-inspired zero-gravity seats create neutral posture and improved blood flow to help make those long rides a lot more comfortable.



Oversized pockets located in the driver and passenger doors offer ample, easy-to-access storage.



High-capacity glove compartment is ideal for pens, pencils, and other important documents.



AIR BAG

STORE IT. HIDE IT. LOCK IT. LOVE IT.

A thoughtfully designed, flexible interior with lots of storage is as important for work as it is for play. Find a spot for your stuff underneath the rear passenger seats, in the side pockets, inside the generous glove compartment, and inside the large centre console. Thirsty? You'll find cup holders almost everywhere you look: mounted in the dash, next to the front seats, in the rear, and even designed into the door pockets.



The centre console includes large cup holders and a deep covered bin for items you want close at hand but out of sight.



Storage trunks conveniently located under the rear seats are perfect for tools you want to keep concealed.

CLIMB, CRAWL AND POWER YOUR WAY THROUGH.

In the NP300 you're equipped to keep right on going, no matter the conditions. At your command is a shift-on-the-fly 4WD system that switches between 2WD and 4WD with the twist of a dial at speeds of up to 100 km/h.



Hill Start Assist



Shift-on-the-fly 4-Wheel Drive



4-Wheel Active Brake Limited Slip



Hill Descent Control



Hill Start Assist and Hill Descent Control. Tackling hilly terrain? Now you can do it with more confidence and control. On an incline, Hill Start Assist can help keep you from rolling backwards from a stop. And Hill Descent Control helps you maintain steady speed and braking, so you get back down a steep grade more safely.

DEVOURS ROADS. SIPPS FUEL.

2.5-litre common-rail turbo-diesel

The sign of a truly modern pickup? One that shows how power, acceleration and fuel efficiency can not just coexist, but thrive.



THE PICKUP YOU CAN TRUST, RIGHT DOWN TO ITS CORE.

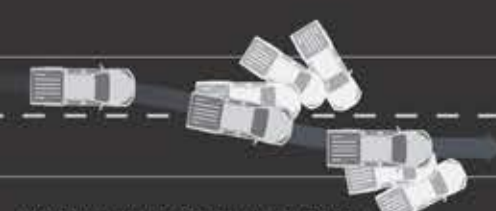


ANGLE OF APPROACH 22.2 degrees

ANGLE OF DEPARTURE 26.5 degrees

328 mm GROUND CLEARANCE (REAR AXLE)

FULLY BOXED, FULLY CABLER.



VEHICLE DYNAMIC CONTROL (VDC).



Traction Control System (TCS).



Anti-lock Braking System (ABS), Electronic Brake Force Distribution (EBD).